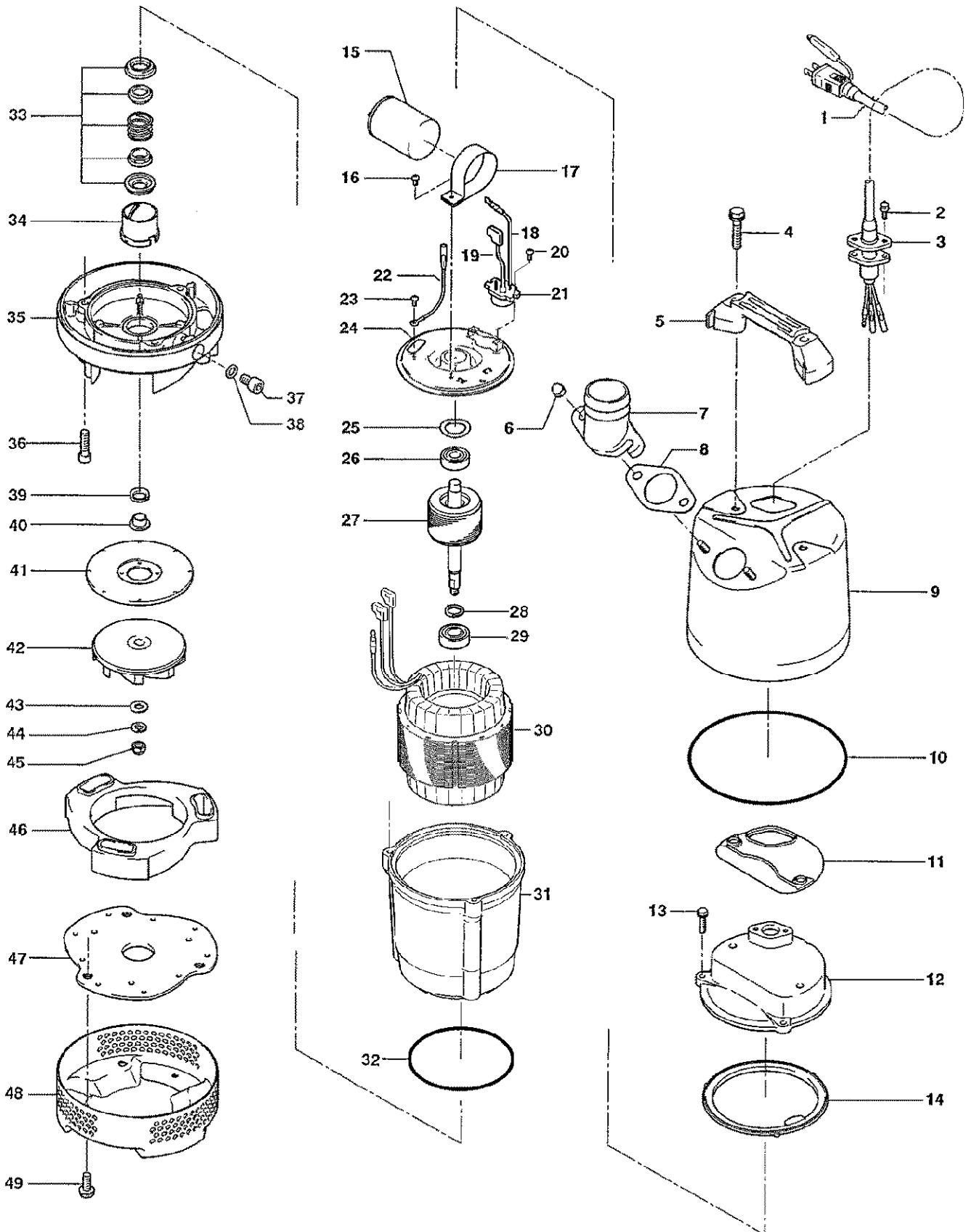


EXPLODED VIEW

LB-800-52/62



MODEL NO,"LB-800-52/62"

No,"PARTS NO.,"DESCRIPTION", "Q'TY", "SPECIFICATION", "MATERIALS", "WEIGHT(kg)", ""
1,"801-00124821-9", "Cabtyre Cable Set (5m)220/230/240V-50Hz", "1", "VCT3Cx1.25mm2(CEE)", "LB", "", "4800"
,"801-00146920-9", "Cabtyre Cable Set (5m)110V-60Hz", "1", "VCT3Cx2mm2(CEE)", "LB", "", "8000"
,"801-00124821-9", "Cabtyre Cable Set (5m)220V-60Hz", "1", "VCT3Cx1.25mm2(CEE)", "LB", "", "4800"
,"801-00116914-9", "Cabtyre Cable Set (5m)220/230/240V-50Hz(THA)", "1", "VCT3Cx1.25mm2", "LB", "1", "4800"
,"801-00124821-9", "Cabtyre Cable Set (5m)220/230/240V-50Hz", "1", "VCT3Cx1.25mm2(CEE)", "LB", "", "4800"
2,"801-14042717-9", "Hex.Bolt (w/Plain Washer)", "2", "M5x15", "SUS304", "0.001", "96"
3,"801-00319010-9", "Gland", "1", "", "SUS316", "0.01", "780"
4,"801-14000013-9", "Hex.Bolt (w/Plain Washer)", "2", "M8x65", "SUS304", "0.025", "400"
5,"801-06800006-9", "Handle", "1", "LB-250/480-52/62", "Resin", "", "1360"
6,"801-14114410-9", "Hex.Nut (w/Flange)", "2", "M8", "SUS304", "", "320"
7,"801-03200012-9", "Hose Coupling 220/230/240V-50Hz", "1", "50mm(LB-480-52/62)", "ADC", "0.11", "1400"
,"801-18100118-9", "Hose Band", "1", "55mm(d50)", "SWMG", "0.03", "280"
,"801-03200012-9", "Hose Coupling 110V-60Hz", "1", "50mm(LB-480-52/62)", "ADC", "0.11", "1400"
,"801-18100118-9", "Hose Band", "1", "55mm(d50)", "SWMG", "0.03", "280"
,"801-03200012-9", "Hose Coupling 220V-60Hz", "1", "50mm(LB-480-52/62)", "ADC", "0.11", "1400"
,"801-18100118-9", "Hose Band", "1", "55mm(d50)", "SWMG", "0.03", "280"
,"801-03200012-9", "Hose Coupling 220/230/240V-50Hz(THA)", "1", "50mm(LB-480-52/62)", "ADC", "0.11", "1400"
,"801-18100118-9", "Hose Band", "1", "55mm(d50)", "SWMG", "0.03", "280"
,"801-03200028-9", "Hose Coupling 220/230/240V-50Hz", "1", "80mm(45)", "ADC", "", "8400"
,"801-18100004-9", "Hose Band", "1", "80mm(d80)", "SWMG", "", "720"
8,"801-12158717-9", "Packing", "1", "LB-250/480-51/61", "NBR", "0.001", "*" "
9,"801-06500022-9", "Outer Cover", "1", "", "SPC", "", "6820"
10,"801-12245316-9", "O-Ring", "1", "172xd2.7", "NBR", "0.001", "*" "
11,"801-12143418-9", "Packing", "1", "LB3-250/480", "Synthetic Rubber", "0.013", "*" "
12,"801-05100055-9", "Head Cover", "1", "", "ADC", "0.558", "15180"
13,"801-14039616-9", "Hex.Bolt (w/Plain Washer)", "3", "M6x20", "SUS304", "0.001", "100"
14,"801-12154614-9", "Packing", "1", "d120xd142x6.2t", "NBR", "0.02", "*" "
15,"801-07600049-9", "Capacitor 220/230/240V-50Hz", "1", "15MF-450VAC(d45x70L)", "", "0.119", "9800"
,"801-07600047-9", "Capacitor 110V-60Hz", "1", "66MF-270VAC(d51x70L)", "", "0.148", "11400"
,"801-07600048-9", "Capacitor 220V-60Hz", "1", "20MF-500VAC(d51x70L)", "", "0.148", "9800"
,"801-07600049-9", "Capacitor 220/230/240V-50Hz(THA)", "1", "15MF-450VAC(d45x70L)", "", "0.119", "9800"
,"801-07600049-9", "Capacitor 220/230/240V-50Hz", "1", "15MF-450VAC(d45x70L)", "", "0.119", "9800"
16,"801-14308521-9", "Pan Screw (w/Spring Washer)(1st)", "1", "M4x6", "SWRM", "0.001", "44"
,"801-14308622-9", "Pan Screw (w/Spring Washer)(2nd)", "1", "M4x8", "SWRM", "0.001", "44"
17,"801-12700046-9", "Capacitor Fixing Plate(1st) 220/230/240V-50Hz", "1", "d51(0.5t)", "SPC", "", "DISCONTINUED"
,"801-12700099-9", "Capacitor Fixing Plate(2nd) 220/230/240V-50Hz", "1", "d51(1.0t)", "SPC", "0.03", "4180"
,"801-12700096-9", "Capacitor Fixing Plate(1st) 110V-60Hz", "1", "d45(0.5t)", "SPC", "", "DISCONTINUED"
,"801-12700100-9", "Capacitor Fixing Plate(2nd) 110V-60Hz", "1", "d45(1.0t)", "SPC", "0.026", "4180"
,"801-12700096-9", "Capacitor Fixing Plate(1st) 220V-60Hz", "1", "d45(0.5t)", "SPC", "", "DISCONTINUED"
,"801-12700100-9", "Capacitor Fixing Plate(2nd) 220V-60Hz", "1", "d45(1.0t)", "SPC", "0.026", "4180"
,"801-12700046-9", "Capacitor Fixing Plate(1st) 220/230/240V-50Hz(THA)", "1", "d51(0.5t)", "SPC", "", "DISCONTINUED"
,"801-12700099-9", "Capacitor Fixing Plate(2nd) 220/230/240V-50Hz(THA)", "1", "d51(1.0t)", "SPC", "0.03", "4180"
,"801-12700046-9", "Capacitor Fixing Plate(1st) 220/230/240V-50Hz", "1", "d51(0.5t)", "SPC", "", "DISCONTINUED"
,"801-12700099-9", "Capacitor Fixing Plate(2nd) 220/230/240V-50Hz", "1", "d51(1.0t)", "SPC", "0.03", "4180"
18,"801-00900103-9", "Intermediate Lead Wire", "1Set", "AWG16x160(red)", "", "0.092", "560"
19,"801-00900142-9", "Intermediate Lead Wire", "1Set", "AWG16x80(Indigo)", "", "0.064", "520"
20,"801-14300043-9", "Truss Screw", "2", "M4x8", "SWRM", "0.002", "44"
21,"801-05300204-9", "Motor Protector 220/230/240V-50Hz", "1", "KA142-LYTL01F", "(T.C)", "0.11", "5880"
,"801-05300196-9", "Motor Protector 110V-60Hz", "1", "KA142-LABL22F", "(T.C)", "0.11", "5880"
,"801-05300200-9", "Motor Protector 220V-60Hz", "1", "KA142-LYVL22F", "(T.C)", "0.11", "5880"
,"801-05300204-9", "Motor Protector 220/230/240V-50Hz(THA)", "1", "KA142-LYTL01F", "(T.C)", "0.11", "5880"
,"801-05300204-9", "Motor Protector 220/230/240V-50Hz", "1", "KA142-LYTL01F", "(T.C)", "0.11", "5880"
22,"801-00900102-9", "Earth Terminal", "1Set", "UL1015-AWG18,G/Y,L=160", "", "0.067", "480"
23,"801-14320314-9", "Pan Screw", "1", "M4x5", "C360", "", "28"
24,"801-05000061-9", "Motor Bracket", "1", "", "SECD", "0.186", "4880"

25,"801-14200041-9","Wave Washer","1","#6201(T=0.4),"S65CM","",,"360"
 26,"801-05210015-9","Bearing","1","6201ZC3","",,"0.04","1000"
 27,"801-05500298-9","Rotor","1Set","w/Bearing","",,"1.663","30320"
 28,"801-06118017-9","Bearing Collar","1","d15.1xd20x1.6t","SS","0.023","580"
 29,"801-05215212-9","Bearing","1","6302ZC3","",,"0.09","1600"
 30,"801-05600827-9","Stator 220/230/240V-50Hz","1Set","",,"4.316","39400"
 ,"801-05600825-9","Stator 110V-60Hz","1Set","",,"4.167","39400"
 ,"801-05600826-9","Stator 220V-60Hz","1Set","",,"4.284","39400"
 ,"801-05600827-9","Stator 220/230/240V-50Hz(THA)","1Set","",,"4.316","39400"
 ,"801-05600827-9","Stator 220/230/240V-50Hz","1Set","",,"4.316","39400"
 31,"801-06400127-9","Motor Frame","1","",,"ADC","1.211","18400"
 32,"801-12213317-9","O-Ring","1","G-110(109.4xd3.1)","NBR","0.001","*" "
 33,"801-02500005-9","Mechanical Seal","1","W-14VC","SSiC","0.05","4920"
 34,"801-03000009-9","Oil Lifter","1","W-14VL","Resin","0.009","220"
 35,"801-02900072-9","Oil Casing","1","LB-750-51/61","ADC","",,"10340"
 36,"801-14025219-9","Hex.Socket Cap Bolt","3","M6x20","SUS304","0.001","220"
 37,"801-03512412-9","Oil Plug","1","M10x15","SUS304","",,"340"
 38,"801-12124611-9","Packing","1","d10.3xd16x2t","PE","0.001","*" "
 39,"801-12244111-9","V-Ring","1","VR-14","NBR","0.001","480"
 40,"801-07129214-9","Shaft Sleeve","1","LB3-250/480","SUS304","0.001","560"
 41,"801-03100012-9","Wear Ring","1","LSC1.4S-51/61","SPC+Rubber","0.105","1960"
 42,"801-02100752-9","Impeller (50Hz)","1","LB-800-52","Urethane Rubber","0.15","8780"
 42,"801-02100756-9","Impeller (60Hz)","1","LB-800-62","Urethane Rubber","0.18","8780"
 43,"801-14212710-9","Plain Washer","1","M8","SUS304","0.001","36"
 44,"801-14216318-9","Spring Washer","1","M8","SUS304","0.001","36"
 45,"801-14103012-9","Hex.Cap Nut","1","M8","SUS304","0.001","340"
 46,"801-02000043-9","Pump Casing","1","LB-750","BR+NR","",,"16180"
 47,"801-02200127-9","Suction Cover","1","LSC1.4S-51/61","SPC+Rubber","0.43","4400"
 48,"801-02354718-9","Strainer Stand","1","LB-250/480-51/61","SPCC","0.57","3020"
 49,"801-14000014-9","Hex.Bolt (w/Plain Washer)","3","M8x20","SUS304","",,"156"
 ,","<Packing O-Ring Set>","",,"",,"",,""
 ,"801-17356712-9","Packing O-Ring Set","1Set","(Marked by *)","",,"0.055","1720"
 8,"801-12158717-9","Packing (Hose Coupling)","1","LB-250/480-51/61","NBR","0.001","*" "
 10,"801-12245316-9","O-Ring (Out.Cover/O.Casing)","1","172xd2.7","NBR","0.001","*" "
 11,"801-12143418-9","Packing (Out.Cover/Head Cover)","1","LB3-250/480","Synthetic Rubber","0.013","*" "
 14,"801-12154614-9","Packing (Head Cover/M.Frame)","1","d120xd142x6.2t","NBR","0.02","*" "
 32,"801-12213317-9","O-Ring (M.Frame/O.Casing)","1","G-110(109.4xd3.1)","NBR","0.001","*" "
 38,"801-12124611-9","Packing (Oil Plug)","1","d10.3xd16x2t","PE","0.001","*" "
 ,","Lubricant","",,"Turbine Oil VG32 155ml","",,"",,""